

Spectrum Folding Doors

Instructions for Double or Single Doors

Mount Spectrum lock on either side of the door opening and at any height desired.

Single Door Lock Installation

Step 1

Locate Door Lock jamb casing. Using holes A, mount to door jamb with two screws provided. See figure 1.

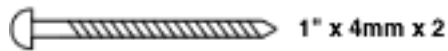
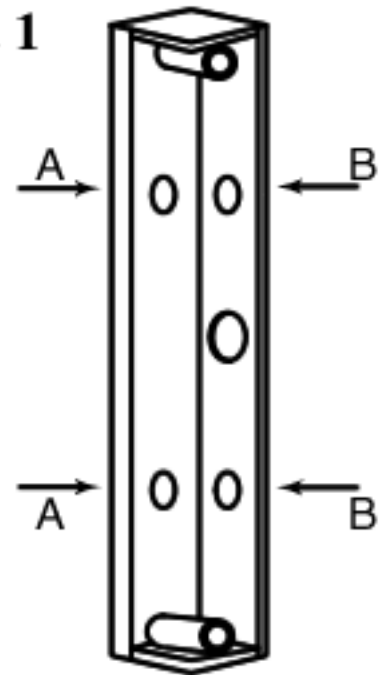


Fig. 1



Step 2

Select hook according to folding door styles as follows: Long hook door styles: Encore, Luxtra, Woodshire, Oakmont, and Panache. Short hook door styles: Horizon, Via, Contempra. Figure 2.

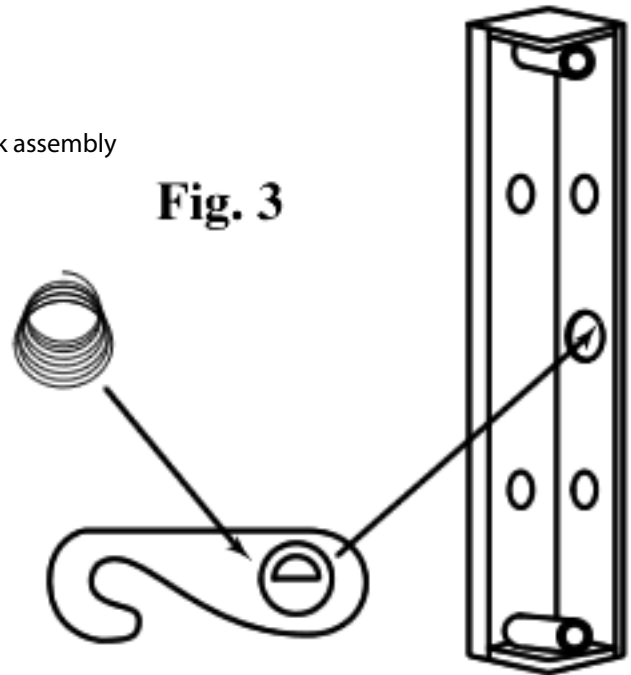
Fig. 2



Spectrum Folding Doors

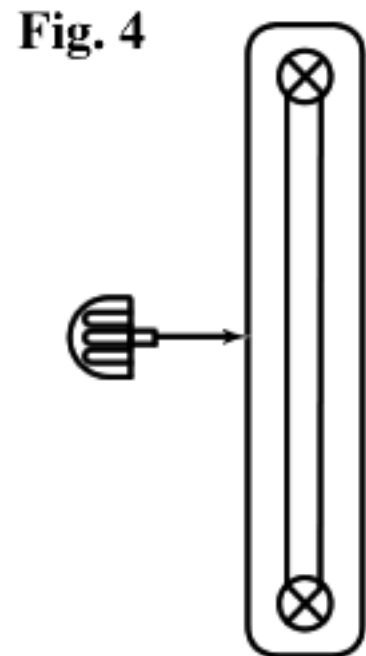
Step 3

Attach spring onto the hook as shown in step 3. Insert spring and hook assembly into center hole on side of jamb casing. See figure 3.



Step 4

Mount cover of lock casing and screw into place with two screws provided. Attach knob to either side of casing. See figure 4.v



Spectrum Folding Doors

Step 5

Pull door closed and with hook extended, place latch pin in position. With a small nail, mark location of screw holes into lead edge of door. See figure 5..

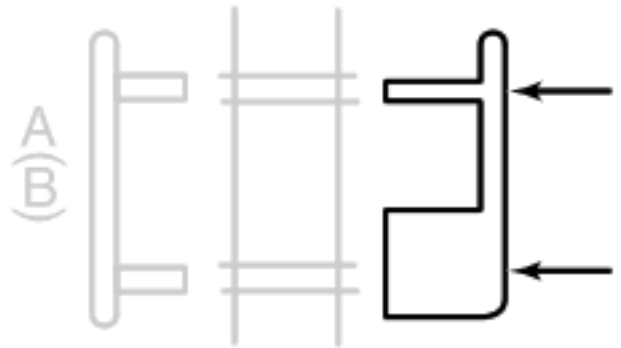


Fig. 5

Step 6

Remove latch pin. Using a 1/4" drill bit, slowly drill straight through door. See figure 6.

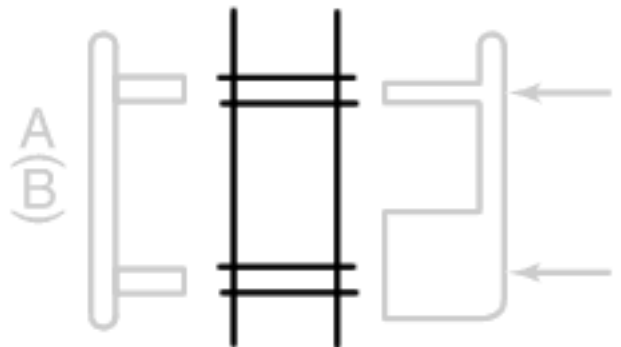


Fig. 6

Step 7

From opposite side of the door, insert anchor piece. Reposition latch and attach with two screws provided. Tighten gently. See figure 7.

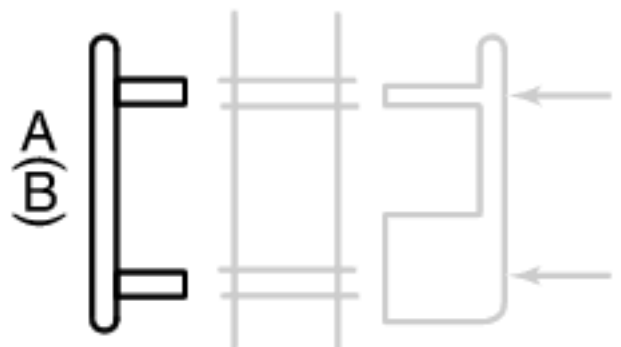
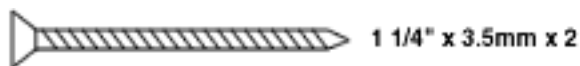


Fig. 7

Spectrum Folding Doors

Double Door Lock Installation

Step 1

Locate Door Lock jamb casing. See figure 1. Using holes B, mount to side of folding door, flush to door edge with 2 (two) screws provided. Follow Steps 2 thru 7 to complete installation.

