

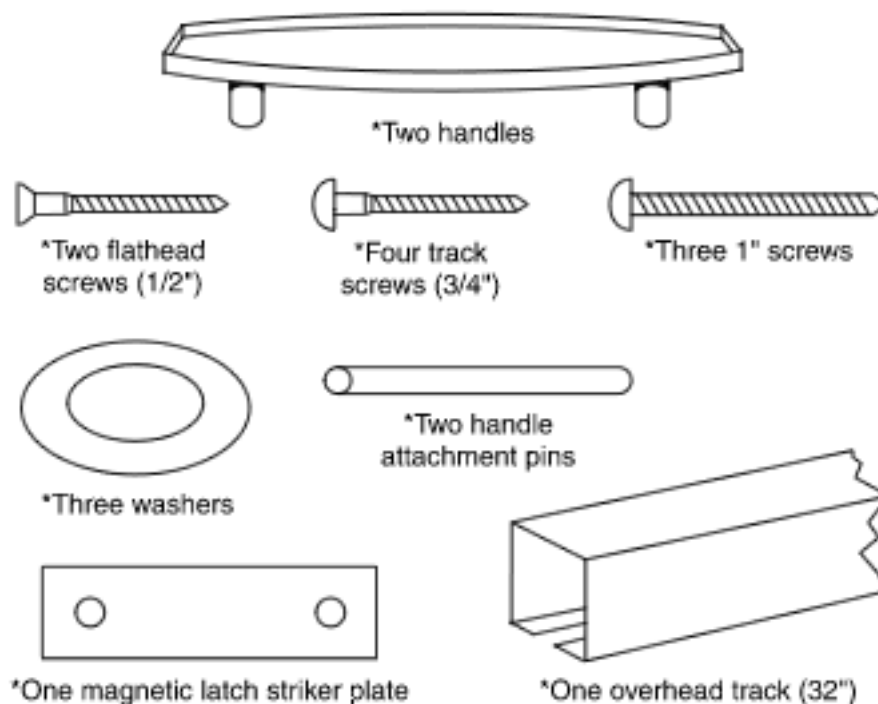
## Horizon Folding Doors

### Before You Start

For quick and easy installation of your Horizon folding door, read these instructions thoroughly. A few minutes of prior planning will make the job easier and ensure years of trouble-free use.

### The Tools You Will Need

- Small #1 Phillips type screwdriver,
- a tape measure,
- a small nail,
- a sharp punch,
- a 3/32" drill for screw pilot-holes,
- and a hacksaw or fine tooth saw (saw needed only if door opening is less than 80" high)



## Horizon Folding Doors

### SECTION 1

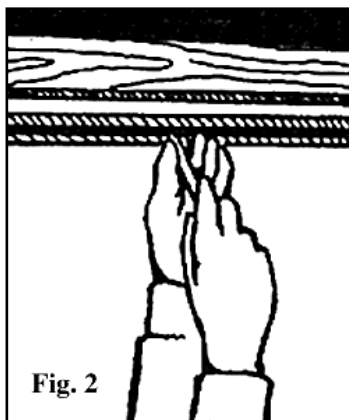
#### Step 1 - Measure the Door Opening

If the height of your door opening is approximately 80", you will not need to alter the door itself. If the opening is less than 80" high, the door may be shortened by sawing off the bottom of the door panels. If the opening is less than 80" high: Stack the door panels together and cut excess with a hacksaw or fine tooth saw. Cut the overhead track 1/8" shorter than the width of the opening. See figure 1.



#### Step 2 - Install the Overhead Track

Position the Horizon overhead track on the top of the door opening so that it is straight and centered. After making a screw pilot-hole (with a nail or 3/32" drill), drive a 3/4" track screw through the screw hole nearest the center of the track. Do not tighten. (Tape may be used to hold the track in place while you mark and drill.) See figure 2.

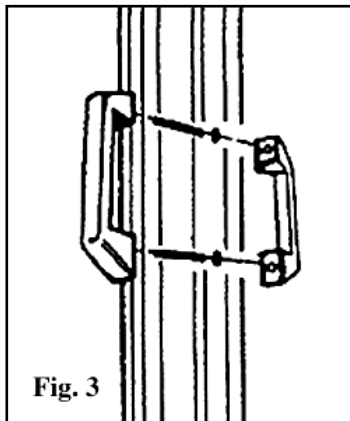


## Horizon Folding Doors

### SECTION 1 (continued)

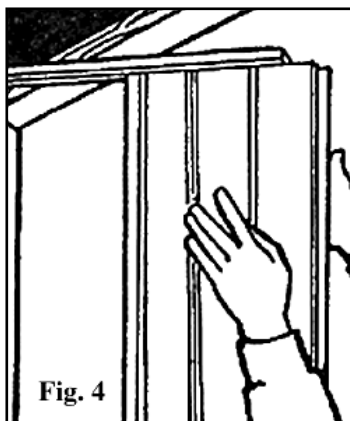
#### Step 3 - Install the Handles

If the height of your door opening is approximately 80", you will not need to alter the door itself. If the opening is less than 80" high, the door may be shortened by sawing off the bottom of the door panels. If the opening is less than 80" high: Stack the door panels together and cut excess with a hacksaw or fine tooth saw. Cut the overhead track 1/8" shorter than the width of the opening. See figure 1.



#### Step 4 - Install the Horizon Door

Apply track lubricant to the overhead track. Swing one end of the overhead track out of the door opening to accept the top glides. Decide if you want the door to open from the left or right, then slide all top glides into the track. Stack the panels together near the center screw. See figure 4.

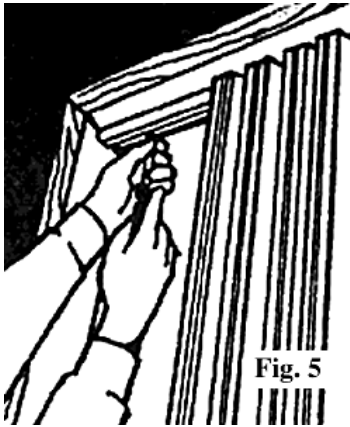


## Horizon Folding Doors

### SECTION 1 (continued)

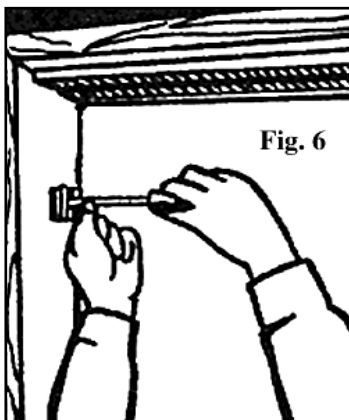
#### Step 5 - Secure One Overhead Track

If the height of your door opening is approximately 80", you will not need to alter the door itself. If the opening is less than 80" high, the door may be shortened by sawing off the bottom of the door panels. If the opening is less than 80" high: Stack the door panels together and cut excess with a hacksaw or fine tooth saw. Cut the overhead track 1/8" shorter than the width of the opening. See figure 1.



#### Step 6 - Secure the Anchor Panel

Slide the entire door against the non-opening side of the doorway. With the door panel hanging naturally, locate the six holes on the anchor panel where the door will be secured to the jamb. Using washers, insert screws and secure the end panel to the jamb. See figure 6.

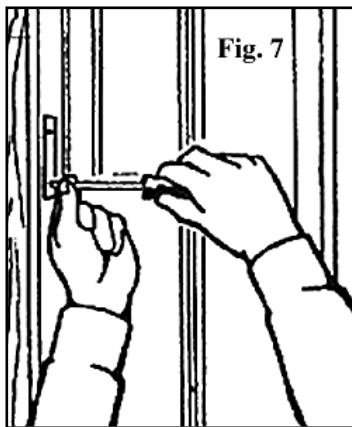


## Horizon Folding Doors

### SECTION 1 (continued)

#### Step 7 - Install the Magnetic Latch Striker Plate

Place the magnetic latch striker plate against the metal strips in the door edge. Close the door until it strikes the door jamb. Mark the proper location of the latch. Affix the latch to the door jamb with 3/4" flathead screws. See figure 7 and figure door.



### SECTION 2 - Instructions for Horizon Double Door Installation

For openings wider than 32" and less than 64", two doors may be used in pairs.

#### Step 1 - Measure the Door Opening

Divide the width of the opening by two. Cut each overhead track to this measurement so that when installed, the tracks butt against one another in the center of the door opening.

#### Step 2 - Install the Overhead Track

On a center line drawn across the top of the door opening, install either half track and install all screws in the half track. Refer to Section 1, steps 2 and 4.

#### Step 3 - Install the Horizon Door

Install the two doors in the half track with lead edges facing each other. Then install the second track and push one door onto this track. Set a screw at the track center joint and leave the screw projecting down 1/2" to prevent glides from passing the joint.

#### Step 4 - Measure the Door Opening

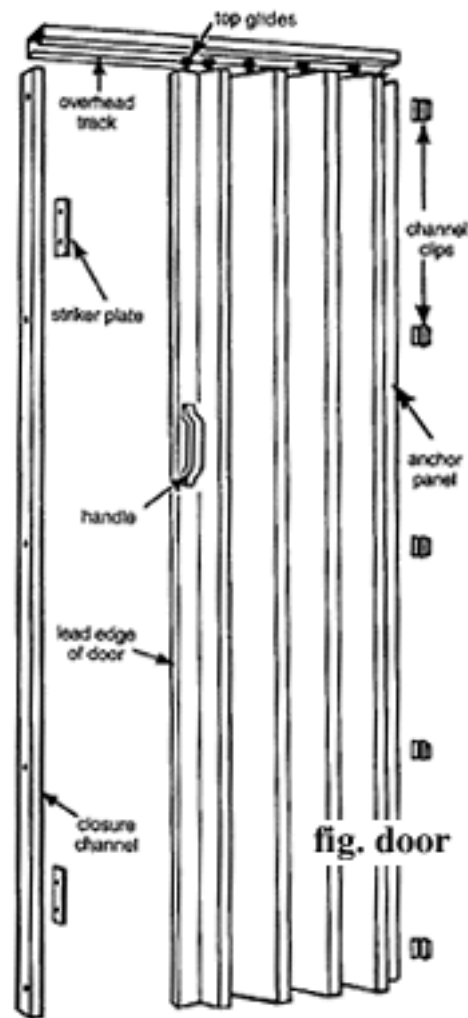
Divide the width of the opening by two. Cut each overhead track to this measurement so that when installed, the tracks butt against one another in the center of the door opening.

## Horizon Folding Doors

### SECTION 2 (continued)

#### Step 5 - Complete the Installation

Follow single door installation steps 3 through 6. Note on heavier double door installation additional holes and track screws may be required in order to make the track more secure. Add screws as required. See figure door.



*This is a representative drawing.*

© 1994 LTL Home Products, Inc.